

pumps | electric & air

Electric and Air Powered Pumps are the most popular Edson Pumps due to the convenience, versatility and economy of the drives. They are perfect for pumping the bilge, sewage collection or transfer, spill clean up, oil collection and pump-outs of marina sumps and holding tanks. Both models are available in a 20 GPM or a 40 GPM configuration.

Features:

- 0–40 GPM Electric and Air Powered Pumps.
- Self-priming from dry starts to 15 vertical feet /3.7 meters.
- Handle solids up to 1.5" in diameter.
- Large flow through inlet and discharge passages for virtual clog-proof operation.
- Reinforced diaphragms and valves = long life (over 30,000 cycles).
- Available in marine grade red bronze or anodized aluminum.
- Available for 1.5"–2" NPT Ports.
- Built tough for years of service.
- Designed simple for on board maintenance.

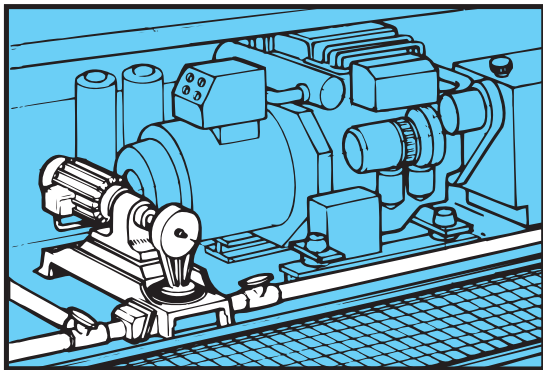
20 GPM Electric & Air Powered Pumps

20 GPM Pumps are perfect for smaller volume applications. The Air Powered Pumps require a compressed air source of 8 CFM at 85 PSI. The Electric Pumps are sold standard running at 56 cycles per min, powered by a 1/2 HP, 1 PH, TEFC motor. Optional operating speeds and optional motors, such as 12v and 24v DC, are available upon request.



40 GPM Electric & Air Powered Pumps

40 GPM Pumps are perfect for applications that require greater volumes of material to be moved. The Air Powered Pumps require a compressed air source of 15 cfm at 85 psi. The Electric Pumps are sold standard running at 56 cycles per min, powered by a 3/4 HP, 1 PH, TEFC motor. Optional operating speeds, optional motors i.e. 12v and 24v DC motors and optional 1 1/2" inlet and outlet ports are available upon request.



GO TO

Go to www.edsonpumps.com for our complete line of pumps and accessories.

20 GPM POWER PUMP ORDERING GUIDE

Pump Description	Material	Suction, Discharge & Hose Size	Pump Weight lbs / kgs	Order #
Electric Powered	Aluminum	1 1/2" / 3.8 cm NPT	75 / 34.1	220ELA-20-150
	Bronze	1 1/2" / 3.8 cm NPT	82 / 37.2	220ELB-20-150
Air Powered	Aluminum	1 1/2" / 3.8 cm NPT	18.5 / 8.4	220ACA-150
	Bronze	1 1/2" / 3.8 cm NPT	27 / 12.2	220ACB-150

40 GPM POWER PUMP ORDERING GUIDE

Pump Description	Material	Suction, Discharge & Hose Size	Pump Weight lbs / kgs	Order #
Electric Powered	Aluminum	2" / 5.1 cm NPT	79 / 35.8	120ELA-40-200
	Bronze	2" / 5.1 cm NPT	97 / 44.1	120ELB-40-200
Air Powered	Aluminum	2" / 5.1 cm NPT	35 / 15.9	120ACA-200
	Bronze	2" / 5.1 cm NPT	59 / 26.8	120ACB-200

*-1 1/2" Inlet and discharges are available upon request.